



FABCO

Built to last a lifetime

Our skilled team relies on expertise, creativity and the finest quality materials to create premium, beautifully engineered, investment pieces that will last a lifetime.

We are proud that our products are manufactured in the UK using the latest technology and techniques.

Fabco is the leading manufacturer of external and internal steel windows and doors in the UK. Our precisely engineered frames transform any window or door into a stylish focal point, bringing an aesthetic which is a mix of traditional and contemporary.

Fabco uses the latest technology and techniques, making our steel windows and doors the slimmest, most thermally efficient and most secure on the market. This enables maximum glass area and exceptional performance, with the slim lines allowing natural sunlight to fill the room.

We work directly with our clients to create bespoke solutions, guiding them through the entire process from site survey and proposal drawings, all the way through to full fabrication and installation.

We turn the ordinary into the extraordinary!



FABCO



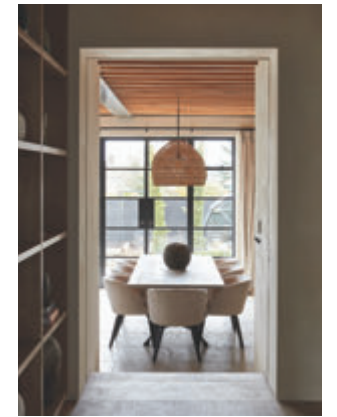
Japandi living, where Japanese elegance meets Nordic calm

This Victorian family home renovation in North London was undertaken with the aim of recreating the open style of Manhattan apartments, where the family had lived, whilst incorporating the house's leafy Hampstead surroundings juxtaposed with influences from the family's Japanese heritage. The use of natural materials was critical to the design, creating calm spaces with clean lines and a strong connection between the indoors and outdoors. The perfect project for Fabco!

Our elegantly slim black frames provide a striking contrast to the existing brickwork, adding a Japandi influence, accentuating the facade and integrating seamlessly into the overall design. The slim sight lines, longevity and quality of the manufacture, along with the recyclability of the steel were all important factors in the client's decision to work with our team. The outcome is a functional and beautiful space both inside and out.



Photography: Chris Snook



Sustainable philosophy at the heart of the home

The travels of the home owner were the inspiration for the transformation of this post-war semi into a beautiful and calming statement home that is a clever fusion of Miami art-deco villa, Santa Fe adobe pueblo and Ibiza beach house.

Sustainability was a key philosophy for the homeowner and the aim was to deliberately support UK based businesses that share that ethos. Manufactured in the UK, crafted from 99% recycled steel, and fully recyclable, Fabco's steel windows are designed with sustainability at their core, making them the perfect choice.

Fabco's attention to detail in the design and manufacture of the windows and doors was critical to the success of the project, also including the addition of important supporting elements, such as shower screens, to create a cohesive and relaxing home which will age beautifully over time.



Photography: Darren Chung - Snug Kitchens

Following the death of Michel Roux OBE, his son Alain created the Alain Roux Culinary School and Michel Roux Library in his honour, an inspired conversion of Michel's former home. Sited next to their world renowned restaurant, The Waterside Inn, nestled in the pretty village of Bray-on-Thames in Berkshire, the new School and Library presents a stunning facility unique to a 3 Michelin star restaurant in the UK.

Fabco worked alongside Nicholas McColgan and Snug Kitchens to create bespoke windows and doors throughout the Culinary School Kitchen and Library. Our experienced team took inspiration from the architecture and functionality of the buildings, allowing natural light to flood into the spaces and maximising views out into the beautiful kitchen garden and riverscape beyond.

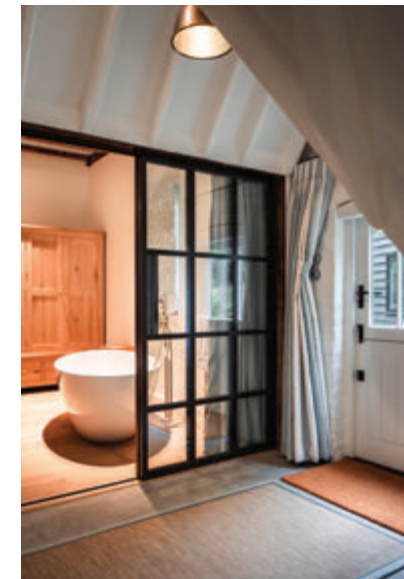


Photography: Fraser Burrows

Framed to perfection



Photography: Latief Okumu



Tradition meets innovation

This convention defying period property presented challenges that Fabco are well practised in solving.

The internal partitions and doors were painstakingly hand crafted to fit with the shapes and eccentricities of the centuries old beams into which they were set. Fabco designed windows and doors throughout the property, along with bespoke additions to the interiors, such as shower screens, all adapting to the lines of the building to give an elegance that is sympathetic to the original structure.

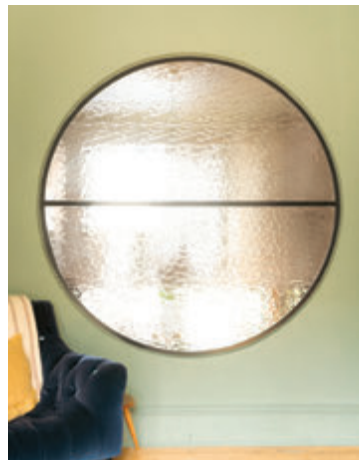
The garden room reinvented

This grand Victorian terrace house was reimagined by Guy Derwent Architects, with a clear brief to produce a dramatic and unusual home for a young, growing family.

Steel windows and doors were selected in large part for their 99% recycled content and thermal performance, alongside Fabco's reputation for quality and attention to detail.

The slim lines and detailing of the steel windows and doors strike a balance between the historical property and the contemporary redesign, while the crisp black frames and panels provide a dramatic contrast to the London stock brick facades. A huge circular cast-glass window forms a visual connection between the old and the new, allowing light and animation through the house.

The fine frames of the garden pavilion create a unique garden room projecting the interior to the landscape and immersing the new building in the garden and creating the perfect space for modern family living.



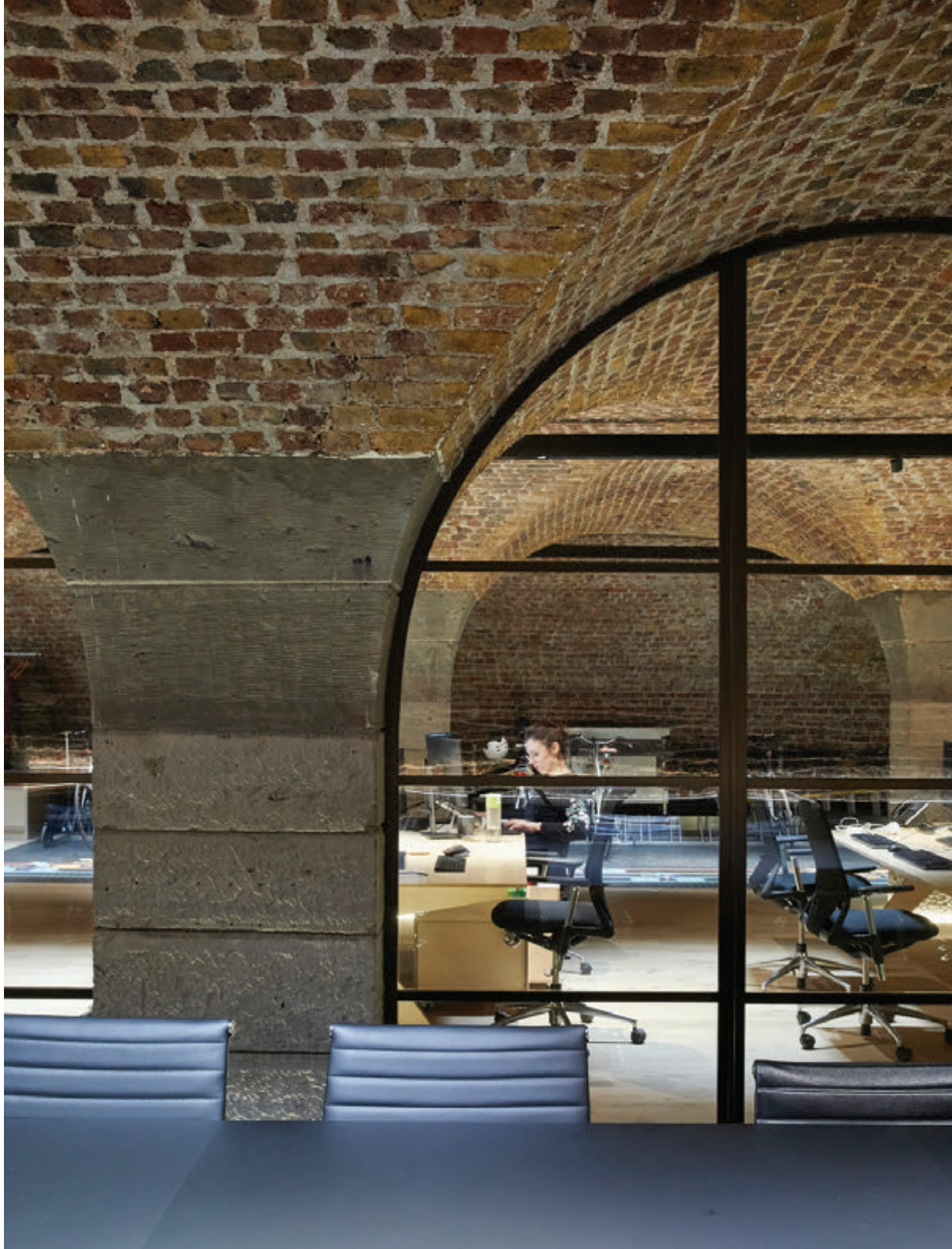


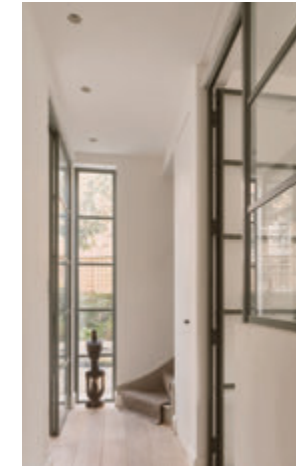
Photography: Paul Riddle

Precision engineering the past

Fabco is often asked to fit steel doors and windows into historic buildings. Here we worked with a 200 year old rum and spice warehouse, which became the new offices for JTP Architects. Not a wall was straight nor an angle equal, and we worked alongside the architects to retain the building's industrial heritage while meeting the demands of modern design, efficiency, and functionality.

Our specific tig and laser welding techniques are incredibly precise and the joins are stronger and less visible than methods used by other steel window and door manufacturers. Fabco designed and manufactured a suite of precision-engineered steel systems tailored to the project's aesthetic and technical needs while enhancing the beautiful inconsistencies of this building.





Tucked away at the end of a quiet cul-de-sac in Hammersmith & Fulham, this historic three-story end-of-terrace mews house has undergone a thoughtful transformation.

The homeowners sought to create a generous family space and a better connection to the outdoors. Fabco's steel windows and doors, with their slim profiles and elegant aesthetic and excellent sustainability credentials, were the perfect choice to emphasise the character and heritage of the architecture. Our thermally efficient windows and doors are available in your choice of RAL colour, and this project was softened by the use of a khaki green shade throughout.

Photography: Simon Kennedy

Framed in colour



The rear extension to this Georgian home needed to be a timeless family space which connected the house with the newly landscaped garden.

Fabco expertly engineered the arched doors, designing for visual impact while sitting in harmony with the architecture, bringing an elegance to the living space and allowing light to flood in.

Let the light flood in

Photography: Chris Snook



Conservation through the generations

Ard na Sidhe a beautiful country house in Caragh Lake, Killorglin in County Kerry, Ireland. A place of enchantment and wondrous luxury, the name translates as the 'Hill of the Fairies'.

Fabco manufactured replacement steel windows to look just like the original fenestration from when it was built by Lady Gordon in 1913. Along with upgrading the steel windows the property now benefits from multi point locking system, thermal benefits of double glazing, plus our unique paint treatment to help them last another 70 years.



For over 35 years Fabco has been a trusted family run company specialising in the design and manufacture of elegantly crafted steel windows and doors which work perfectly in buildings from all architectural periods.

Our business has grown from working in specialist conservation, including many of the finest ecclesiastical and historic buildings. Fabco has restored and replaced steel windows and doors for some of the UK's most prestigious listed buildings, working with The National Trust, English Heritage, and Historic Scotland.



Our team uses their expertise, precision, technology and craftsmanship to bring these treasured buildings back to life. Ensuring we retain their original character and respect the unique qualities and history of each building.

This work has continued and developed so that we now share our expertise with a wider audience and cover all architectural periods.



Our business is built on attention to detail and precision that we achieve by using the latest technology, Fabco uses specific welding machinery and techniques to offer unmatched accuracy and performance, enabling us to create joins are stronger and less visible than traditional methods used by other steel window and door manufacturers. This technology allows us to work within tighter tolerances, resulting in frames that perform better, last longer and have shorter manufacturing times.

We use specific tig and laser welding techniques which are incredibly precise. Our products exceed the industry regulations that surround commercial and residential properties giving peace of mind to our clients.

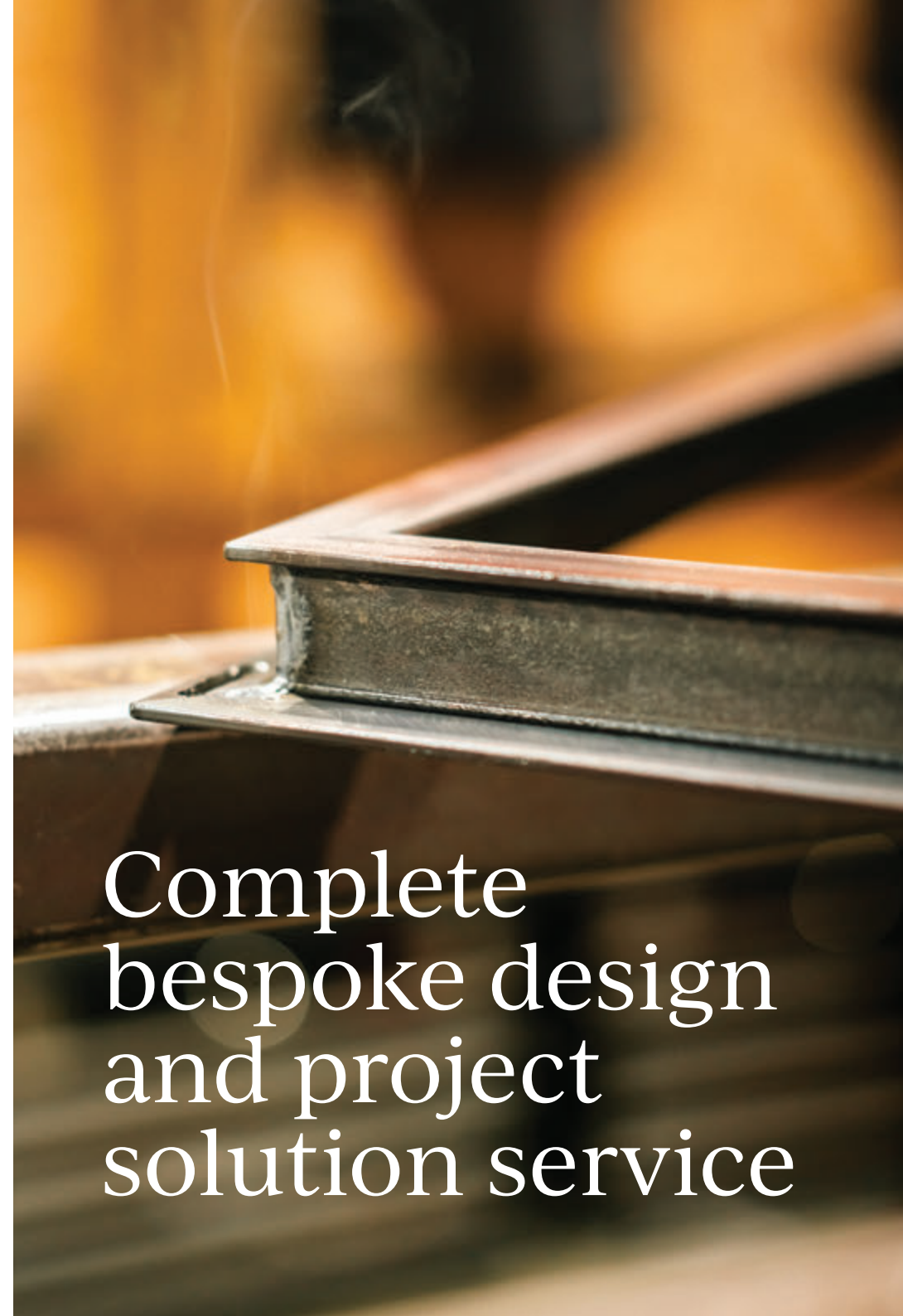
Our steel frames can be designed to a client's exact specifications, and boast industry-leading thermal performance as standard to ensure efficient warmth throughout the room.

Fabco also designs and manufactures bespoke complementary products to ensure that a cohesive and harmonious design flows through the entire interior, including garden rooms, temperature controlled wine cellars, shower screens, and even mirrors.

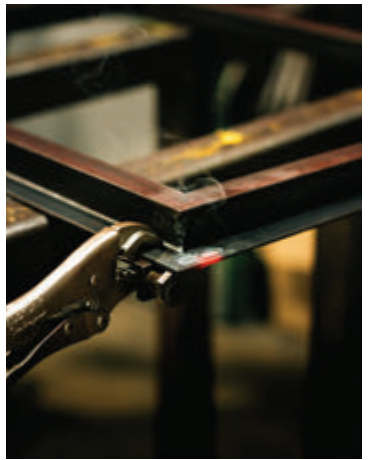
We form close working relationships with our clients, going above and beyond expectations to ensure the finished result is second to none.

For more information visit fabco.co.uk

Our expertise



Complete bespoke design and project solution service



Front cover photography: French+Tye
Architect: Matthew Giles

"The steel doors provide a beautiful and seamless visual connection to the garden, allowing light to flood into the living space while maintaining privacy and insulation. They add a sense of calm and clarity to the home, both aesthetically and experientially, and have become a key design element that anchors the new extension."

Matthew Giles, Architect

Turning the ordinary into the extraordinary



FABCO

01903 718808 | enquiries@fabco.co.uk | fabco.co.uk

